



SHAMBALA SEAVIEW RESIDENCES



"ELEVATE YOUR LIVING WITH CONTEMPORARY INNOVATION INFUSED WITH THAI SERENITY."



NOT JUST A LIVING SPACE, BUT A LIFESTYLE CHOICE

Perched amidst picturesque mountains with captivating views of the Gulf of Thailand, Shambala Seaview Residences seamlessly integrate into their breathtaking natural surroundings. Experience the harmonious fusion of contemporary elegance and timeless Thai allure at Shambala, where you can indulge in an exclusive ambiance, complete with uninterrupted sea vistas from both your bedroom and living space





EMBRACE A DISTINCTIVE CHARM

Indulge in a lifestyle of unparalleled luxury, where every detail is meticulously designed to elevate your living experience. At Shambala, we prioritize personal privacy and the nurturing of family bonds with our intricately crafted elements. Each villa boasts two expansive bedrooms, each a sanctuary of comfort and style, complemented by open living spaces with ceilings soaring up to 3.5 meters. Discover your own paradise at Shambala.



PROJECT OVERVIEW

- Project Name : Shambala Seaview Residences
- Location : Soi Angthong 11, Koh Samui
- Project Land size : 4.276 Rai
- Total units : 11 units
- Villa size : 182 SQM
- Plot size : From 271 to 354 SQM
- Phase 2 of the development
- Gated and Guarded
- Freehold and leasehold available

VILLA FEATURES

- Single level pool villa
- 2 Bedrooms with ensuite bathrooms
- High ceiling Living room and Dining room
- Fully equipped kitchen
- Built in electrical appliances - hood, hob, microwave, oven, refrigerator
- Smart Things system
- Salt Water Infinity Pool
- Outdoor terrace
- Seaview from every room
- 1 car parking
- Storage room

COMMUNITY FACILITES

- 24hr security
- CCTV security
- Villa manager, maid & maintenance
- service (additional cost)







UNIT NO.	BUILT-UP AREA (SQM)	LAND AREA (SQM)
S1	182	354
S2	182	310
S3	182	303
S4	182	281
S5	182	277
S6	182	282
S7	182	265
S8	182	325
S9	182	271
S10	182	305
S11	182	340

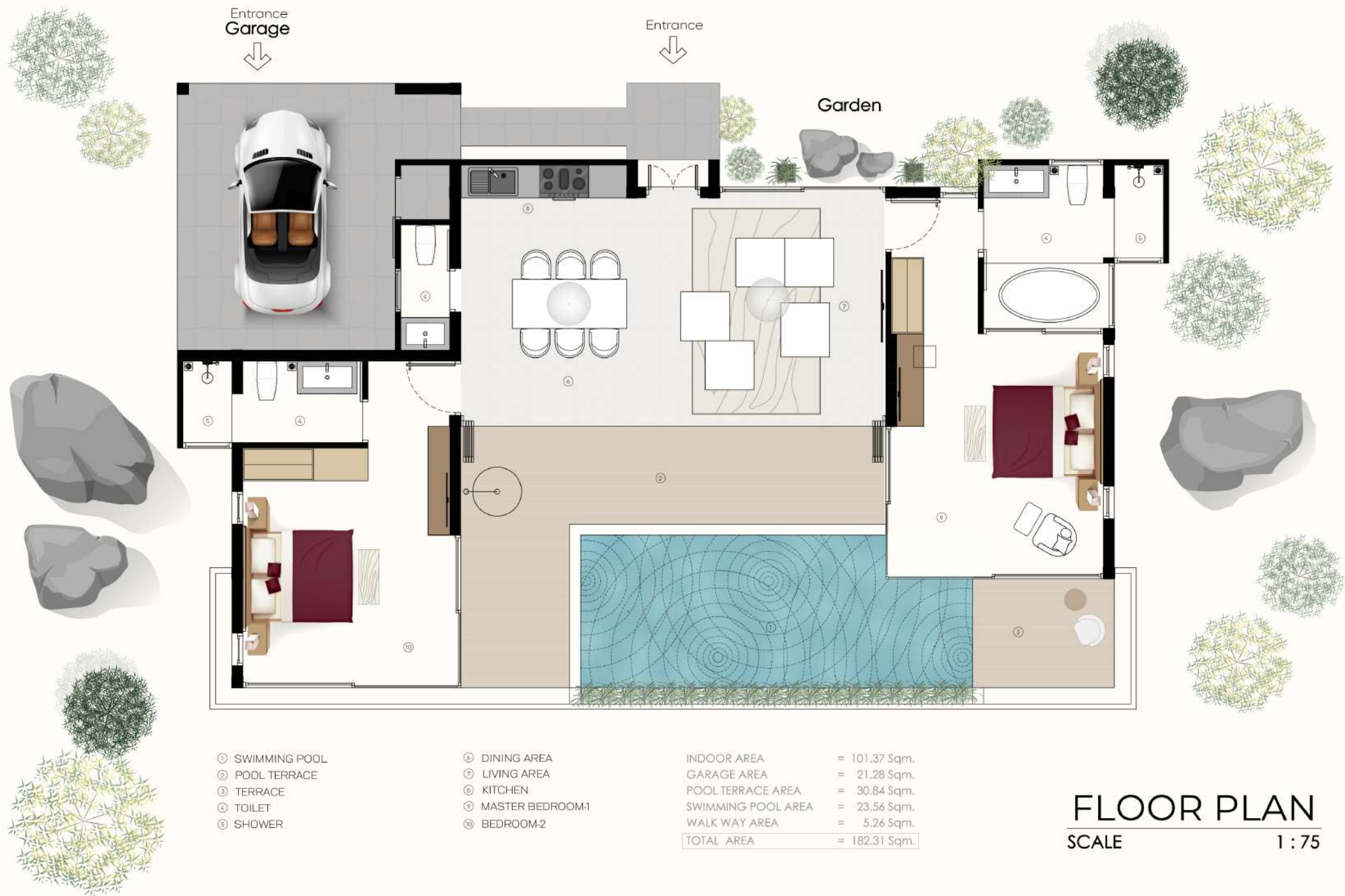


ROAD AREA = 467.78 Sqm. (116.94 Sqw.)

PLOT BUILDING MASTER PLAN

SCALE

1: 500



FLOOR PLAN
SCALE 1 : 75



SHAMBALA SEAVIEW
RESIDENCES

TIMES TO IMPORTANT LOCATIONS FROM THE PROJECT

Bang Makham Beach	1 Mins
Nathon Town[Lotus]	5 Mins
Four Seasons Resorts	4 Mins
Bang Por Beach	5 Mins
Nathon Pier	6 Mins
Santi Buri Golf Course	15 Mins
Koh Samui Hospital	15 Mins
Greenacre Int. School	25 Mins
Fisherman Village	25 Mins
Chaweng Beach	30 Mins
Samui Int. Airport	30 Mins

